

THE GREAT INDOORS | ISSUE 78 | SEP/OCT 2006

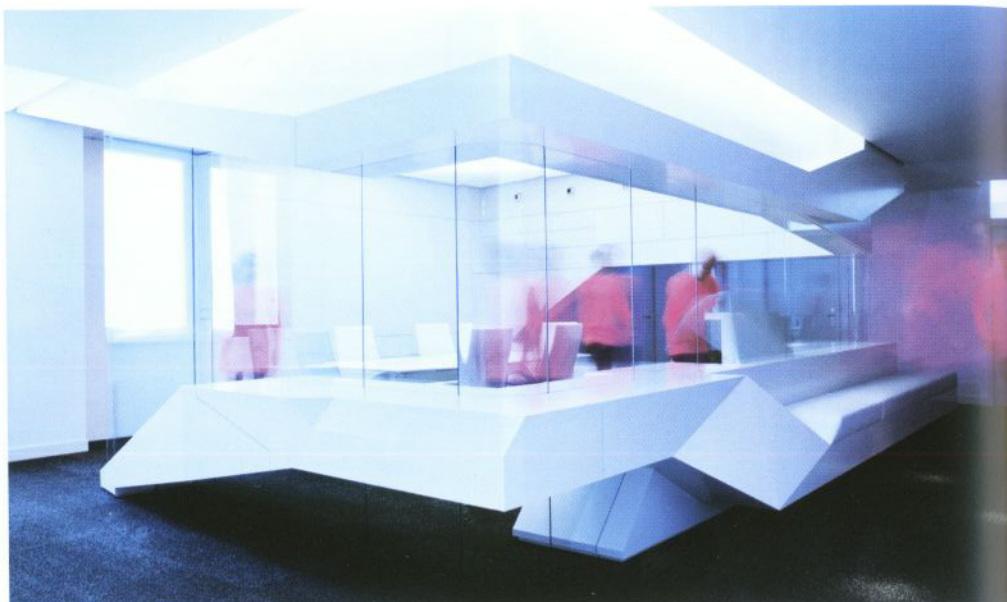
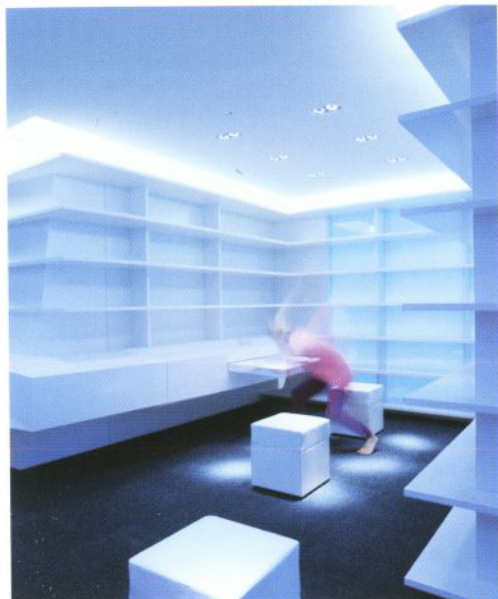
ISSN 0014-0139 100% RECYCLED PAPER PRINTED IN THE U.S. POSTMASTER: SEND NO MONEY NOW
POSTAGE WILL BE PAID BY ADDRESSEE POSTAL SERVICE PERMIT NO. 3500 NEW YORK, NY 10108-0001

FRAME



LET'S CO-CREATE! : DESKTOP ODYSSEY : TAKASHI YAMAGUCHI : SILGASCARD : GRAHAM PULLIN : SID LEE : NEEDCOMPANY : KAI PUPPO
PHILIPPE STARCK : GIULIO RIDOLFI : CAROIGARD CHIC : BARBEROSGERBY : MONOCHROME MIXES : HELLA JONGERUS : TAKE A SEAT

THE
FRONT
ABOUT
COLOR



Sample Cabinet

BY ZETLMAYER_DE_
WINDER_ARCHITEKTEN



Just off Berlin's Kurfürstendamm, on the 830-m² third floor of an office building, a space occupied by German project developer Hochtief surprises with its sculptural simplicity. Zetlmayer_de_winder_architekten's strikingly monumental furniture establishes three quality spaces: a formal meeting room, an open archive and an informal meeting room. The informal room celebrates sculptural form, which is emphasized by the monochrome play of light on a silky white, matte-lacquered surface. Meanwhile, the formal room is capped with luminous white ornamental patterns on the ceiling and fluorescent lights, which together create a dramatic yet minimalist effect. Form is dictated by a hybrid object emerging at two points on one side of the meeting room entrance. Two sculptures form a seating area in changing degrees of proximity. Ultimately, the sculptural forms unite to form the walls of a cabinet consisting of flush-mounted doors, sliding doors, cupboards, and drawers that embrace the main meeting room.

zwoarchitekten.de

WORDS Dara Lang
PHOTOS Mark Seelen

SCULPTURAL WHITE FURNITURE DICTATES THE INTRIGUING FORM AND FLUID FUNCTIONALITY OF THIS OFFICE SPACE.

